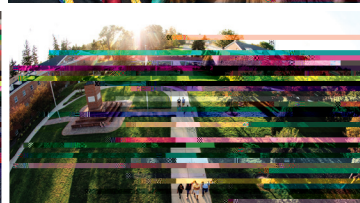
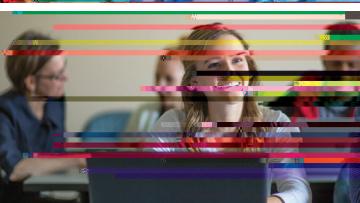
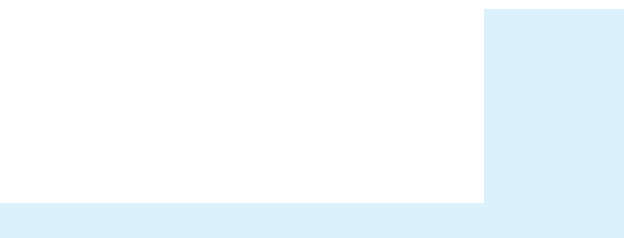
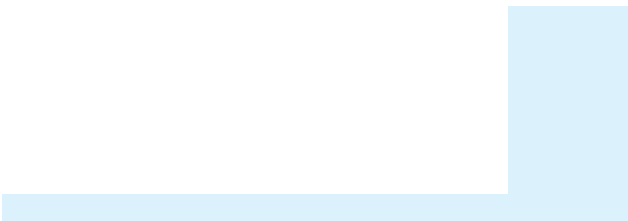
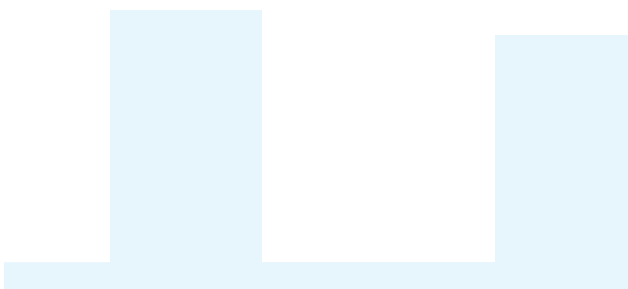
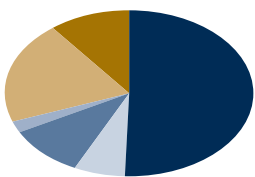
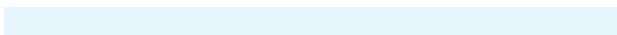


T SHEE1 gs-13n016 05---138









## ATHLETICS

NAIA  
Cougars  
Blue and Green  
Crossroads League

Soccer	X	X	Fall	
Volleyball		X	Fall	
Cross Country	X	X	Fall	
		Fa `	X	Fall

	Total	F-T* P-T/Adj	Total	FTE	Doc.	Bac.	Assoc.	Grad.

\* Includes faculty with F-T contracts that include some administration or coaching .



## FACULTY




\_\_\_\_\_

--	--	--

--	--	--

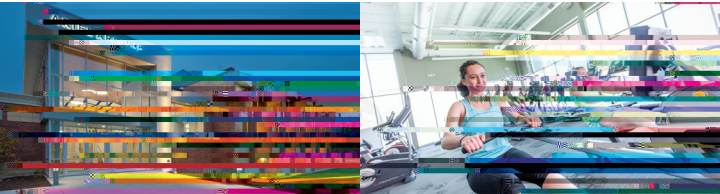
--	--	--






# ANNUAL OPERATING BUDGET

Traditional tuition and fees	\$27,005,600	\$29,024,600
GPS tuition and fees	9,000,000	8,850,918
Traditional financial aid	-13,462,500	-16,056,000
GPS financial aid	-10,000	-12,000



## CAMPUS FACILITIES

Buchwald



800 Martinsburg Road,  
Mount Vernon, OH 43050

Tele. 740-392-6868

Fax 740-397-2769

[www.mvnu.edu](http://www.mvnu.edu)

*Prepared by*

The logo consists of a stylized 'O' containing the letters 'M', 'V', 'N', 'U' in a grid-like arrangement, followed by the text 'OFFICE OF THE PRESIDENT'.

Randie L. Timpe, Assistant to the President (ext. 4122)