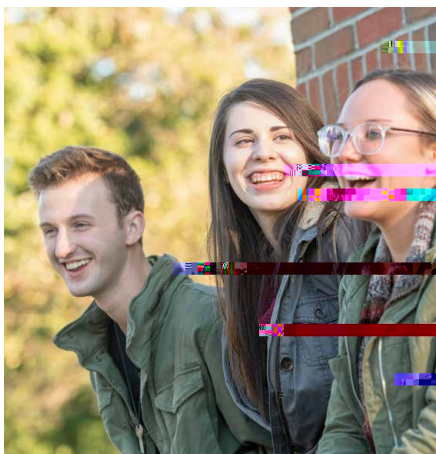
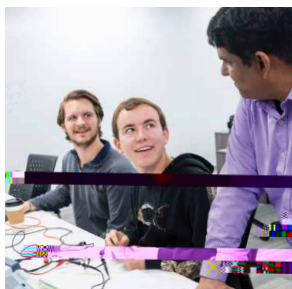
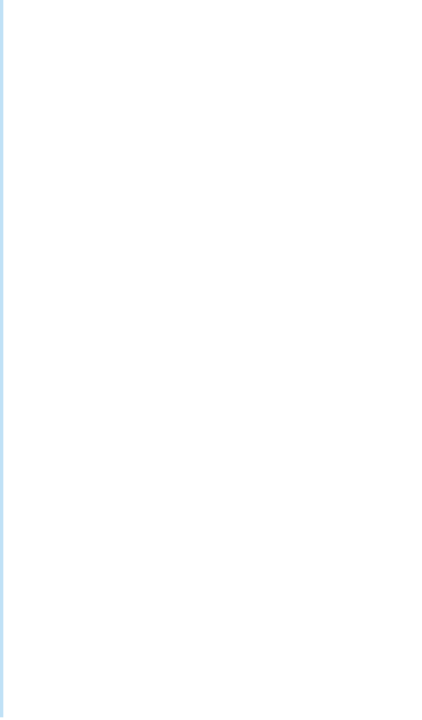
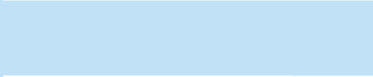
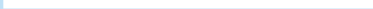
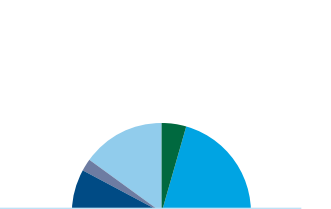
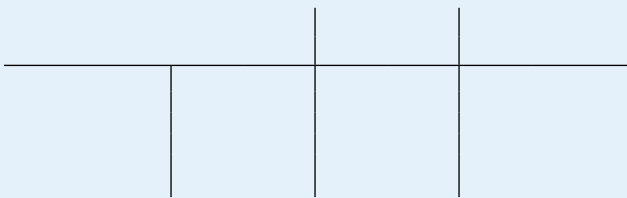


MOUNT VERO RENE UNIV NA

FACT SHEET 2019-2020





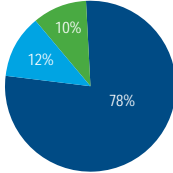


Tuition/Financial Aid and Student Life

TUITION/FINANCIAL AID

Tuition (Traditional)	\$28,994	\$30,154
Room/Apartment	\$4,564	\$4,748
Board	\$3,606	\$3,800
Student Fee	\$250	\$250
Per Credit Hour	\$803	\$838

- Tuition
- Room
- Board



1,676 undergraduates (92%) received \$38,224,182 in aid, including work-study, averaging \$22,807 per undergraduate. 296 graduate students (76%) received \$3,765,402 in aid, averaging \$12,721 per graduate student.

Loans	\$12,225,133	\$12,806,528
Scholarship/Grant	\$4,168,015	\$3,969,827
Employment	\$168,326	\$181,543

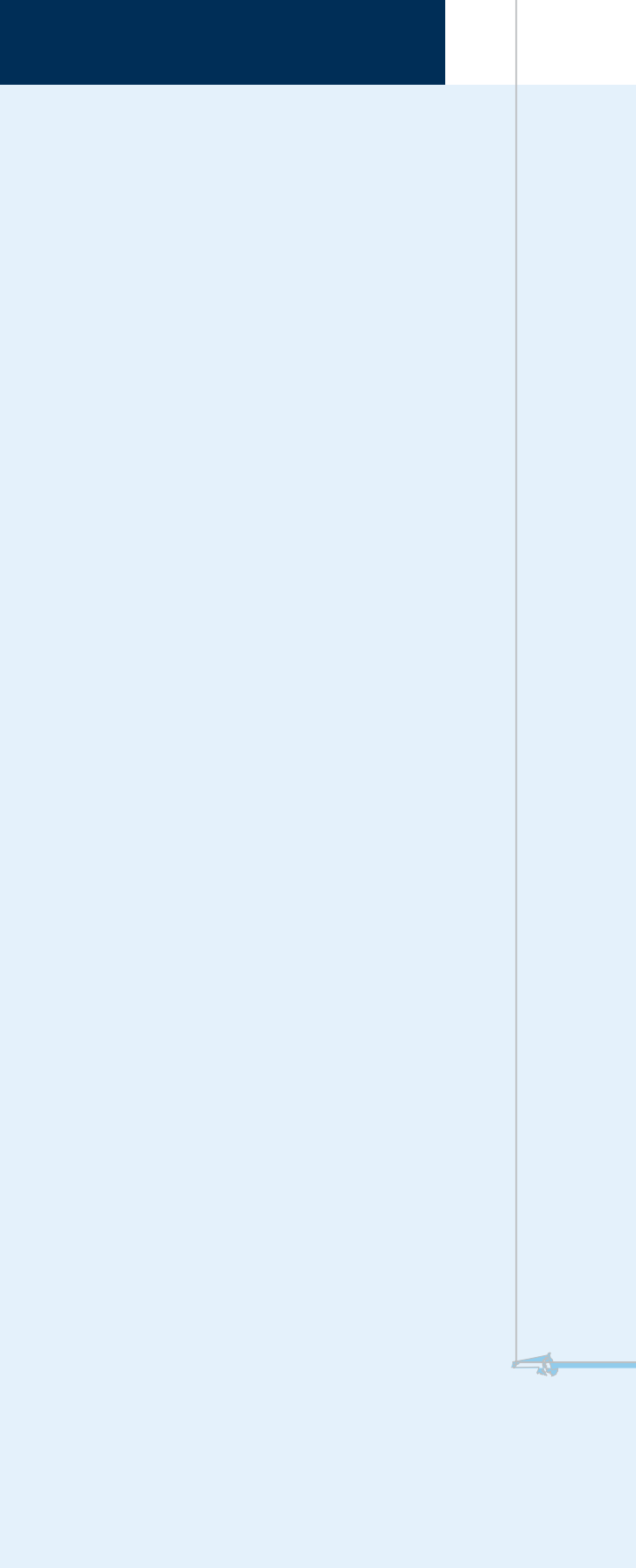
Scholarship/Grant	\$22,522,434	\$22,881,566
Employment	\$740,868	\$939,935

Scholarship/Grant	\$828,131	\$919,887
Private Loan	\$1,614,700	\$2,164,803

STUDENT LIFE

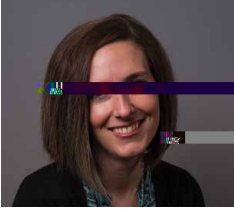
National:	Alpha Chi Ohio Delta	1978
Nazarene:	Phi Delta Lambda	1976
Departmental:	Delta Mu Delta (Business)	1976
	Sigma Tau Delta (English)	2005
	Psi Chi (Psychology)	2010
	Sigma Theta Tau (Nursing)	2013







FACULTY



Rank	Female		Male		Salary*	
Professor	7	26%	20	61%	\$64,620	49%
Associate Prof.	4	15%	4	12%	\$52,903	17%
Assistant Prof.	15	56%	8	24%	\$52,943	33%
Instructor	1	3%	1	3%		1%



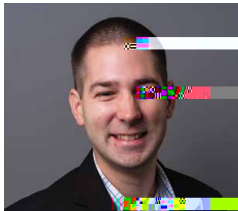
Faculty Member of the Year

LeeAnn H.M. Coutts, Ph.D.

Professor of Psychology

Dean of the School of Natural and Social Sciences

STAFF



Staff Member of the Year

Jared Sponseller

Director of Student Financial Services

ACADEMIC AFFAIRS

Operating Budget and University Relations

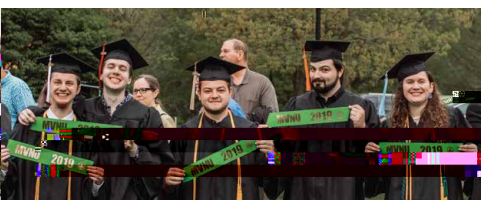
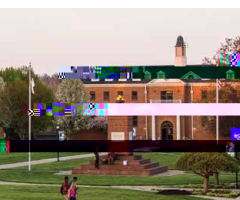
ANNUAL OPERATING BUDGET

Traditional tuition and fees	\$37,375,255	\$37,179,490
GPS tuition and fees	6,100,232	5,783,778
Traditional financial aid	-22,803,720	-22,645,531
GPS financial aid	-152,044	-125,000
Church revenue	1,568,777	1,515,000
Gifts, grants, miscellaneous	773,121	457,304
Auxiliaries	8,722,943	8,625,600
Investment return	29,886	125,000
Non-mandatory transfers	-192,642	-223,187
Total revenue	\$31,421,808	\$30,692,454

UNIVERSITY RELATIONS

*

Eastern Kentucky	\$80,179	\$74,512
East Ohio	\$116,600	\$150,606
North Central Ohio	\$255,013	\$274,936
Northwestern Ohio	\$278,788	\$297,616
South Central Ohio	\$327,023	\$261,736
Southwestern Ohio	\$282,488	\$337,357
West Virginia North	\$104,395	\$117,150
West Virginia South	\$115,874	\$135,673
Total	\$1,560,359	\$1,649,586





CAMPUS MINISTRIES

Belize	10
Guyana	15
Inez, KY	18
Indianapolis, IN	11
McAllen, TX	11
Portland, OR	8
Swaziland	11

There are 14 ministries called CoSMO (Community Service and Ministry Opportunities). These groups serve children, teens, the developmentally disabled, and the elderly. In 2018-19, about 256 students were involved.

The 2018-19 M2540 mission initiatives were as follows:

Fall	Knox Education
Fall	Knox Needs (Food For The Hungry)
Spring	Belize Student Scholarships
Spring	Swaziland

The Campus Ministries division conducts all corporate chapel experiences, freshmen small groups, upper division student mentoring, critical conversations, justice talks, and partner with the Campus Life division on the wellness program.

CAMPUS FACILITIES

BUILDING	CONST.	RENOV	BUILDING	CONST.	RENOV.
Buchwald Center	1904	2009	Indoor Hitting Facility	1998	
Clarence & Jennie Moore Center	2000	2016	Morrison Facilities Building	2011	
Faculty Hall	1970	2017	PineCrest Farm		
Hunter Hall	1940	2011	President's Guest House	1950	2012
Hyson Campus Center	1968	2011	Student Health Services	1977	2007
Jetter School of Business	1990	2008	The Barn	1930	2008
Regents Hall	1984	2017	The Mount Vernon Grand Hotel	2015	
R. R. Hodges Chapel and Fine Arts Center	1989	1991	Welcome Center	1992	2017
Stephen W. Nease Center	1959	2018	William and Evelyn Prince Student Union	1969	2017
Thorne Library/Learning Resources Center	1996	2017	Edgewood Road Property	1983	2018
Academic Services	1978	2005	Birch Apartments	1988	1994
Lakeholm Manor	1870	2007	Cedar Apartments	1975	2018
Founders Hall	1968	2017	Cyprus Apartments	2000	2015
Parry Business Services	1977	1996	Elmwood Apartments	1977	2015
			Galloway Hall	1972	2016
Ariel Arena	2013		Glen House Apartments	1968	
Central Complex	1976	1992	Maplewood Apartments	1976	2016
Couchenour House	1968	2004	Oakwood Hall	1969	2017
Cougar Corner Bookstore	1984	2014	Pioneer Hall	1968	2016
Donoho Recreation Center	1969	2016	Redwood Hall	1998	
Facilities Services Storage	1994		Rosewood Apartments	1995	1996
Historical Ice House	1870	1997	Spruce Apartments	1994	2017



MOUN

800 Martinsburg Road
Mount Vernon, OH 43050

Tel. 740-392-6868
Fax 740-397-2769

Prepared by
Institutional Effectiveness Office

Director of Institutional Research and Accountability
(ext. 4125)